

Dean Suzuki Blog

Title: Fixing TMG to allow Lync Outbound

Created: 10/25/2012

Description:

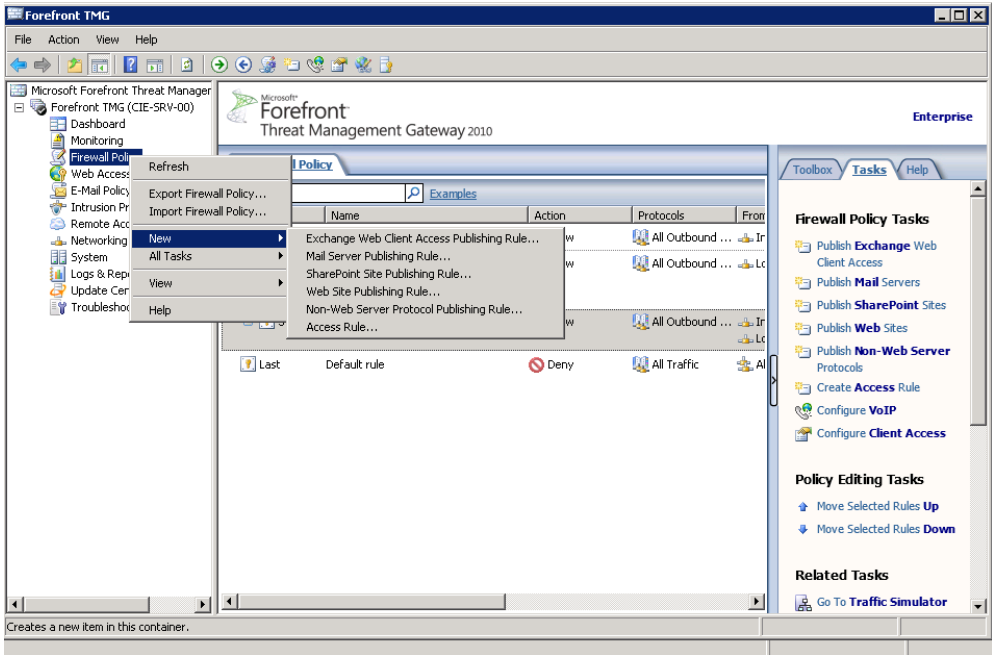
I have noticed issues with connecting to a Lync server which is out over the Internet when the Lync client is on the inside network. I have created a rule that allows all outbound but Lync still has some issues. I found a tool that checks the connectivity for Lync client at:

<http://trippsn2.online.lync.com>

<http://support.microsoft.com/kb/2409256>

<http://support.microsoft.com/kb/2617558>

I discovered that I needed to make the following TMG rules to pass this test.

#	Step
1	Launch TMG Admin Console
2	Go to Firewall Policy and right-click Go New > Access Rule 
	Name the access rule

New Access Rule Wizard

Welcome to the New Access Rule Wizard

This wizard helps you create a new access rule. Access rules define the action that is taken, and the protocols that may be used, when specified clients from one network attempt to access specific destinations or content on another network.

Access rule name:

To continue, click Next.

< Back Next > Cancel

Select Allow

New Access Rule Wizard

Rule Action

Select how client requests for content from the specified destination are dealt with if the conditions specified in the rule are met.

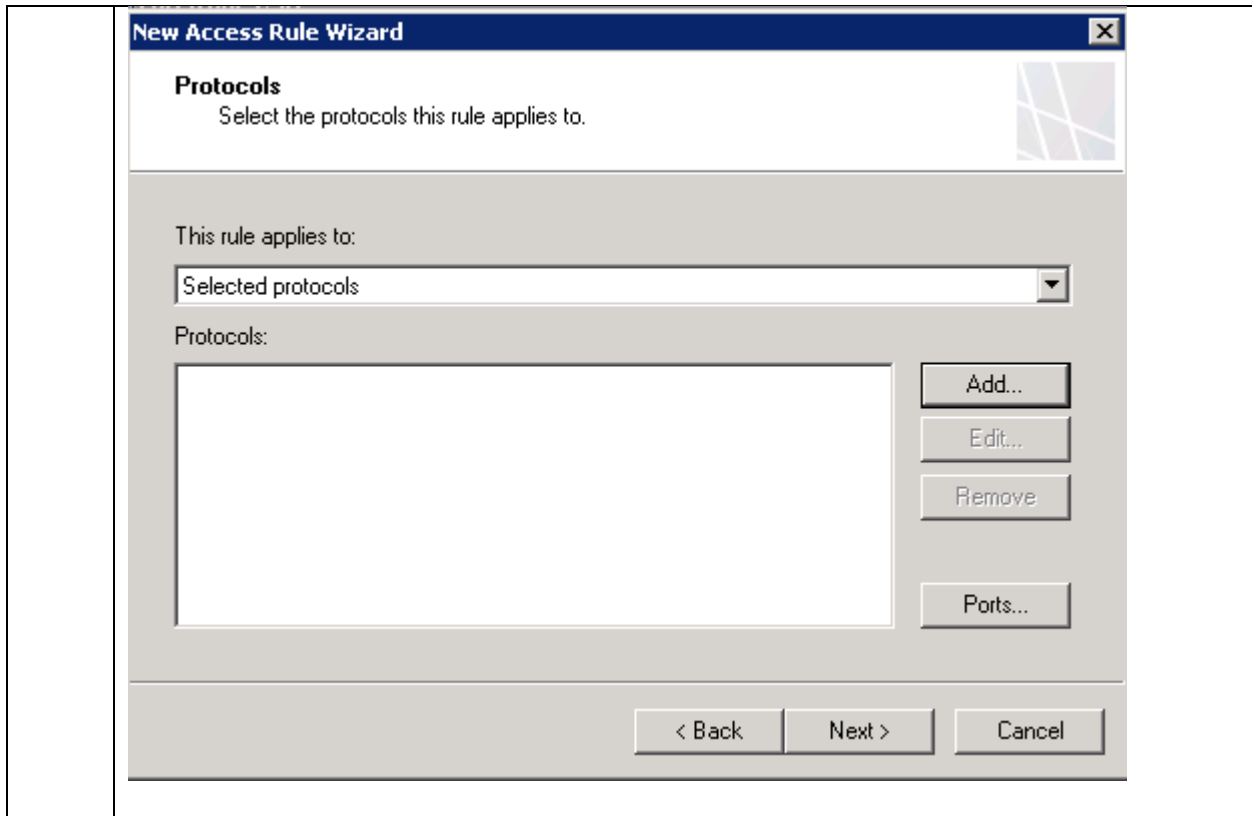
Action to take when rule conditions are met:

Allow

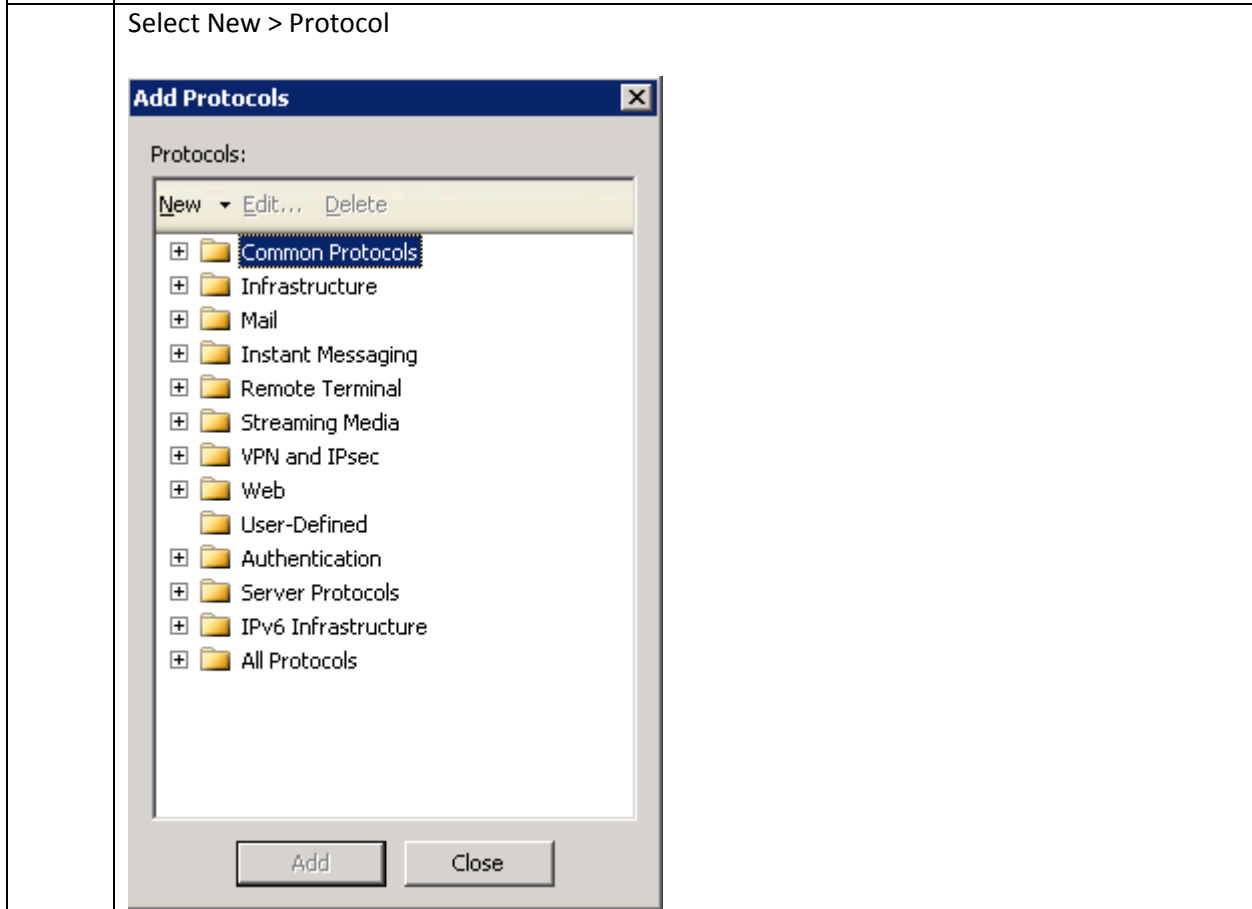
Deny

< Back Next > Cancel

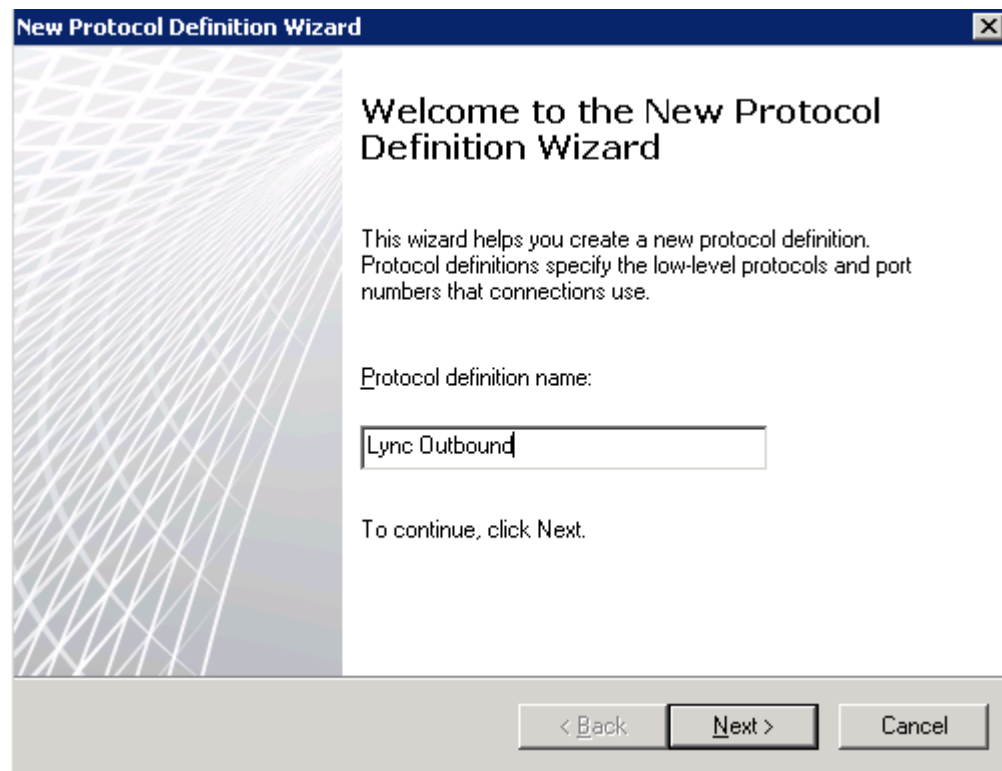
Press Add



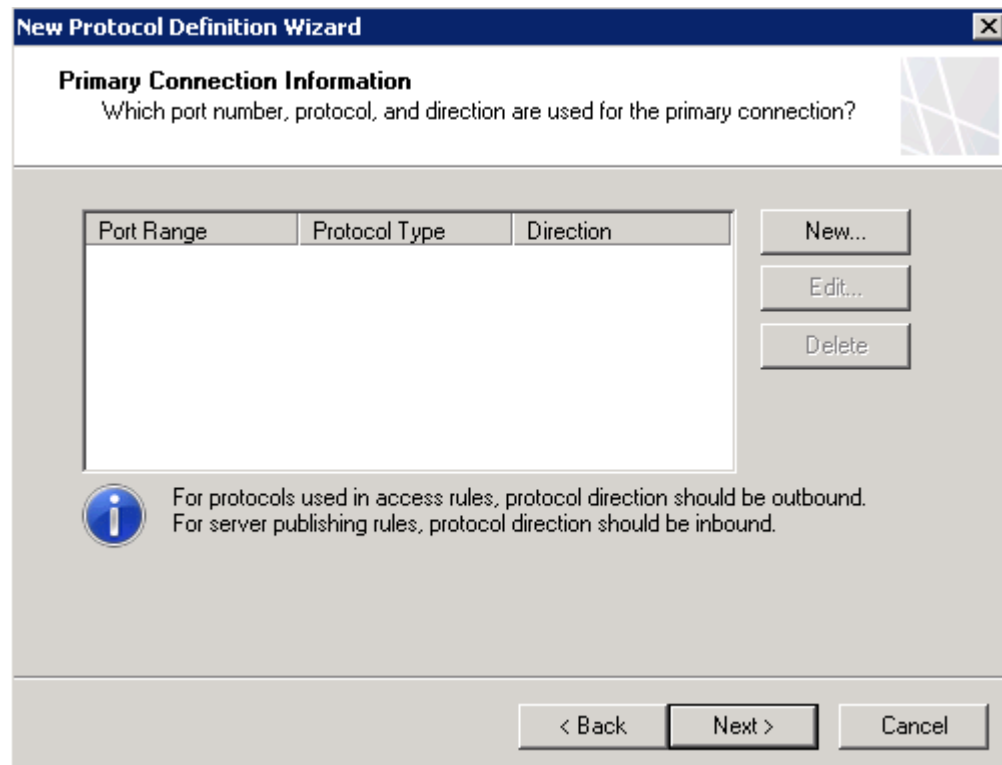
Select New > Protocol



Name the new protocol



Press New



Define new protocol

Set Protocol type to TCP
Direction = Outbound
Port range from 50000 to 50001

The screenshot shows a dialog box titled "New/Edit Protocol Connection" with a close button (X) in the top right corner. The dialog contains the following fields and controls:

- Protocol type: A dropdown menu set to "TCP".
- Protocol Number: A text input field containing the number "6".
- Direction: A dropdown menu set to "Outbound".
- Port Range: A section containing two text input fields: "From:" with "50000" and "To:" with "50001".
- ICMP Properties: A section containing two empty text input fields: "ICMP Code:" and "ICMP Type:".
- At the bottom, there are two buttons: "OK" and "Cancel".

Define another protocol
TCP
Outbound
5060 to 5061

The screenshot shows a dialog box titled "New/Edit Protocol Connection" with a close button (X) in the top right corner. The dialog contains the following fields and controls:

- Protocol type: A dropdown menu set to "TCP".
- Protocol Number: A text input field containing the number "6".
- Direction: A dropdown menu set to "Outbound".
- Port Range: A section containing two text input fields: "From:" with "5060" and "To:" with "5061".
- ICMP Properties: A section containing two empty text input fields: "ICMP Code:" and "ICMP Type:".
- At the bottom, there are two buttons: "OK" and "Cancel".

Define another protocol
UDP
Send Receive
3478

New/Edit Protocol Connection [X]

Protocol type: Protocol Number:

Direction:

Port Range

From: To:

ICMP Properties

ICMP Code: ICMP Type:

Create new protocol
UDP
Send Receive
50000
59999

New/Edit Protocol Connection [X]

Protocol type: Protocol Number:

Direction:

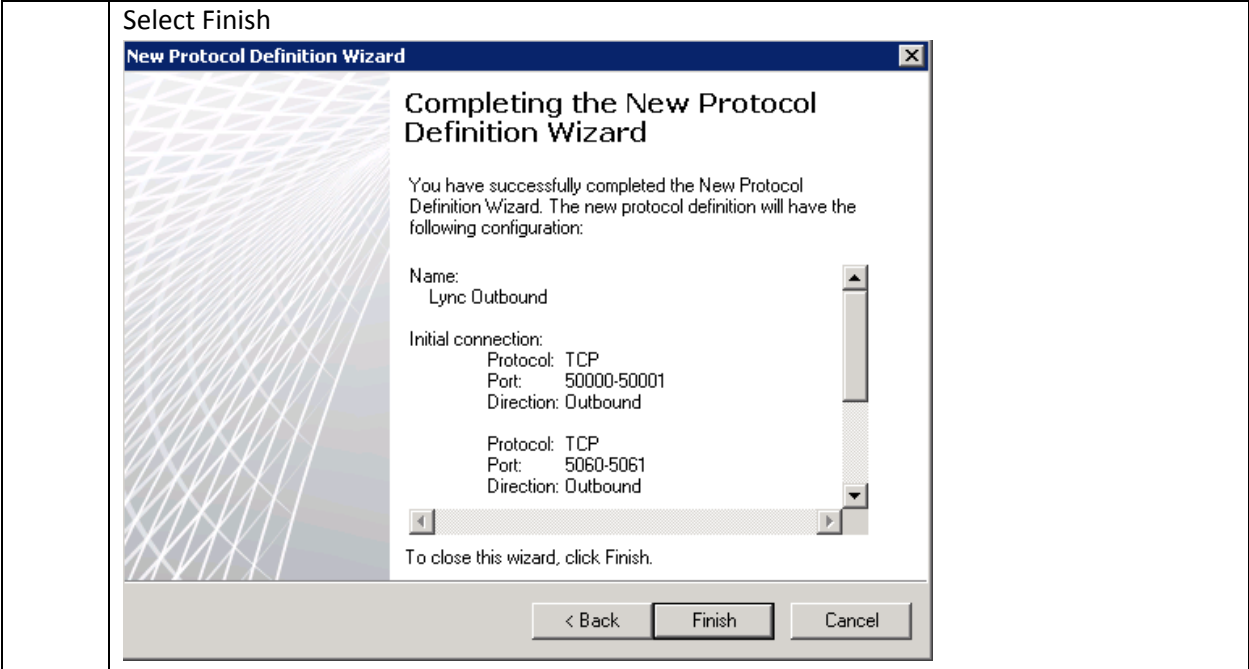
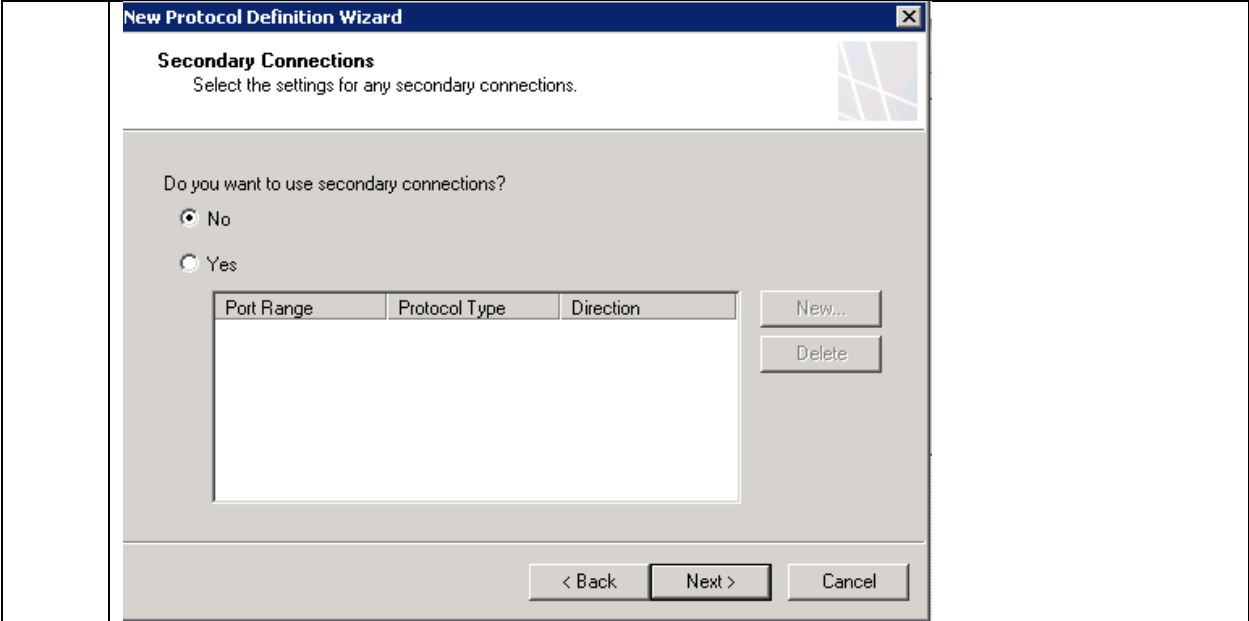
Port Range

From: To:

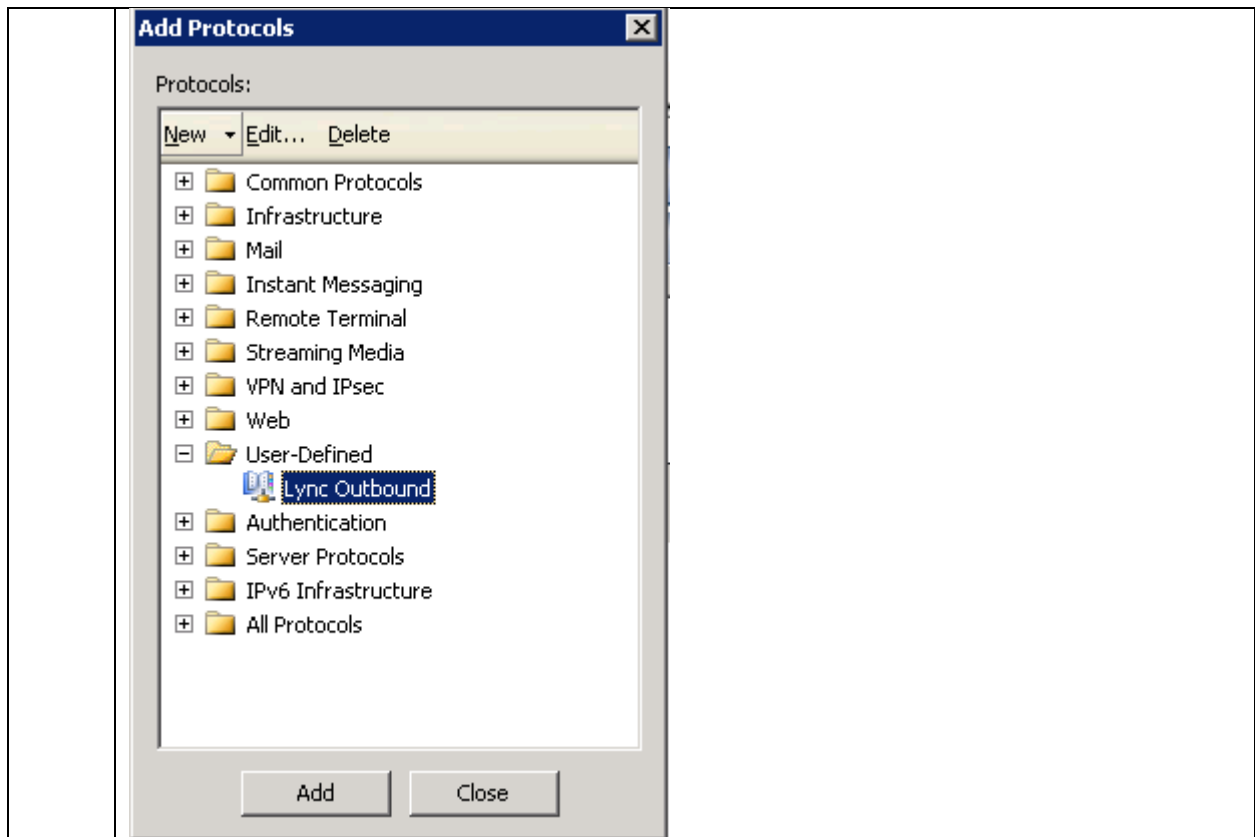
ICMP Properties

ICMP Code: ICMP Type:

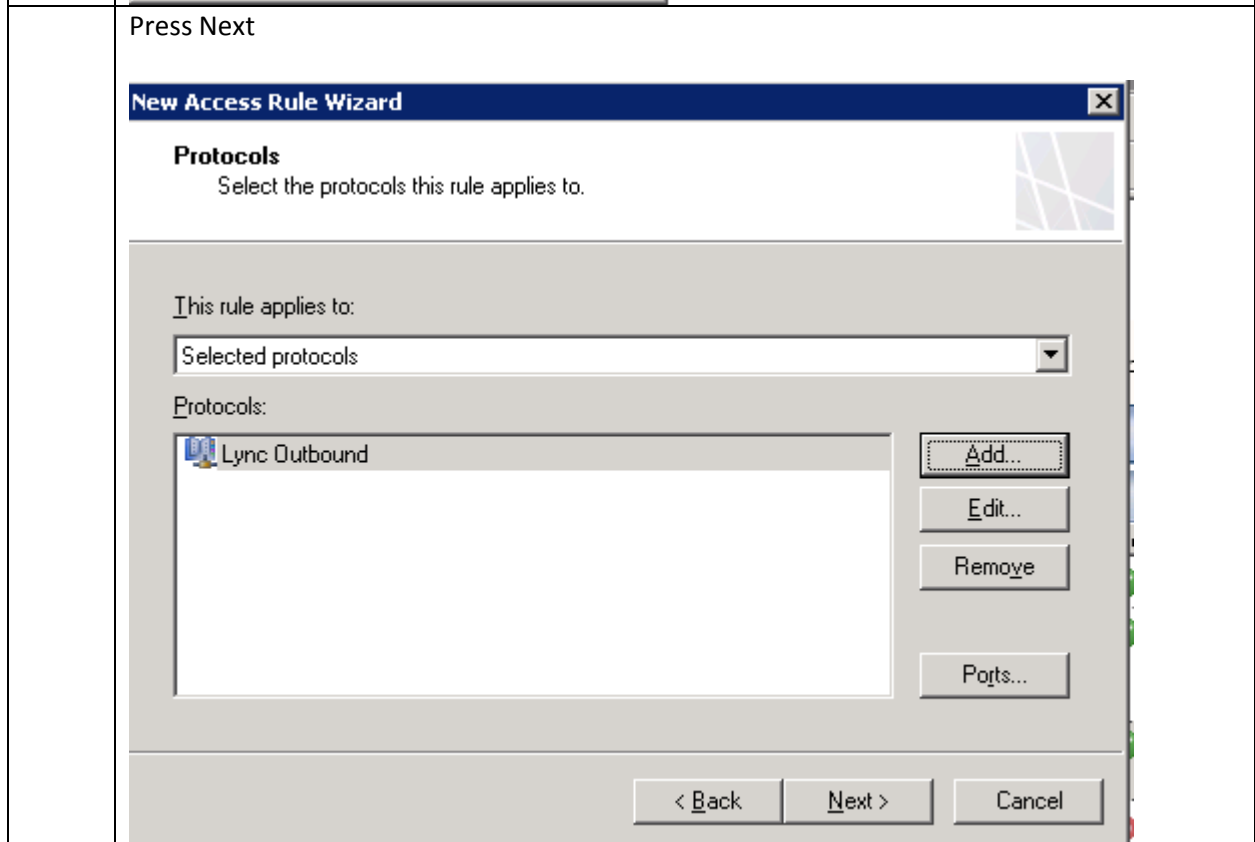
Select Next



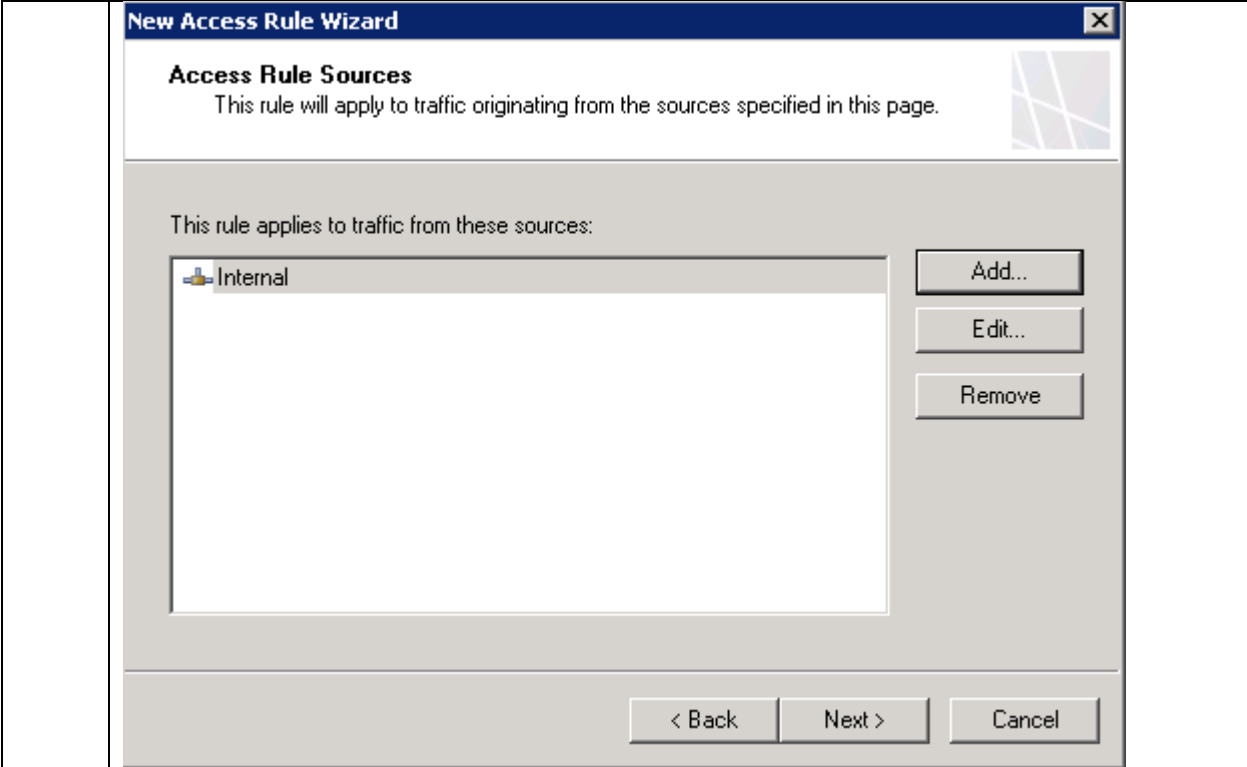
Go to User-defined and select the new protocol that was just created
Press Add and Close



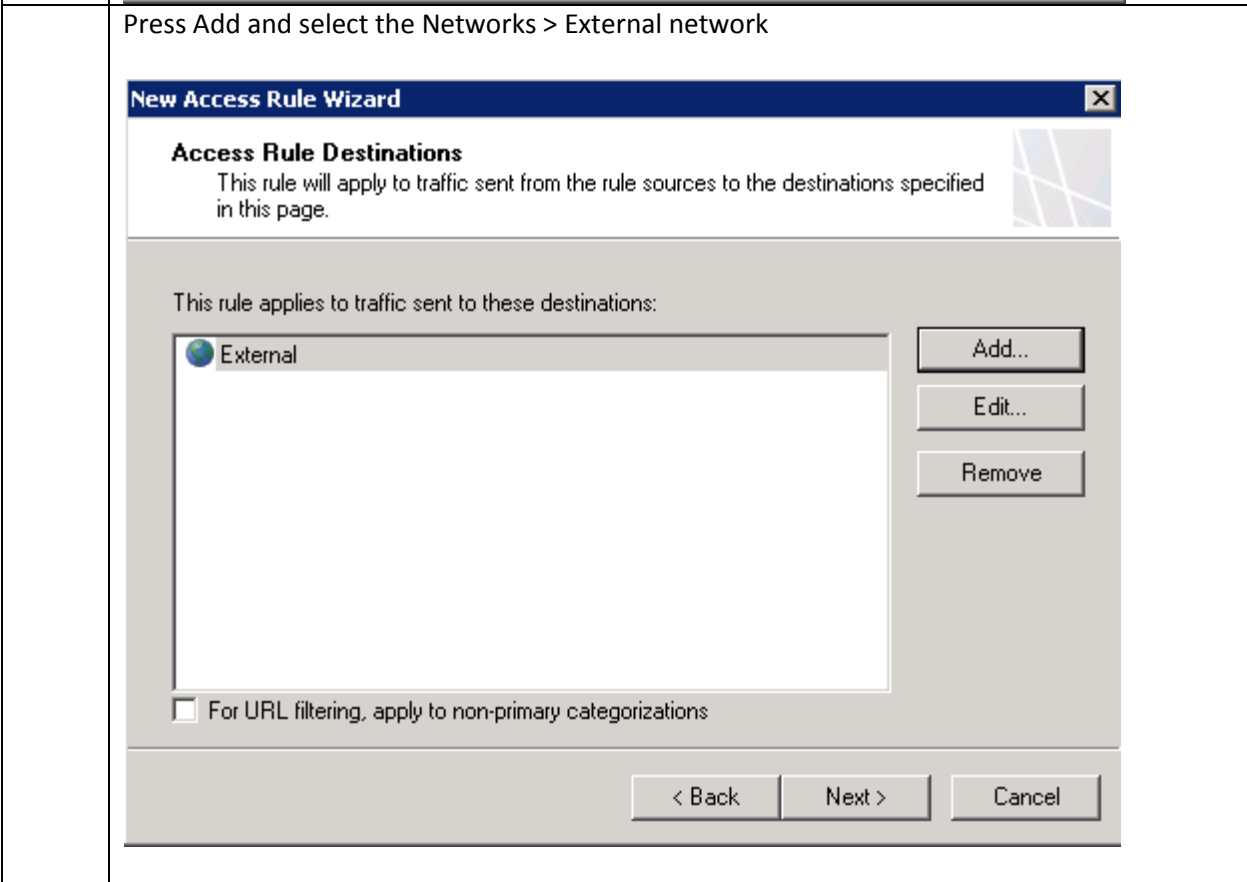
Press Next



Press Add and select the Networks > Internal network



Press Add and select the Networks > External network



New Access Rule Wizard [X]

Access Rule Destinations
This rule will apply to traffic sent from the rule sources to the destinations specified in this page.

This rule applies to traffic sent to these destinations:

- External

Buttons: Add... Edit... Remove

For URL filtering, apply to non-primary categorizations

Buttons: < Back Next > Cancel

Press Next

New Access Rule Wizard [X]

User Sets
You can apply the rule to requests from all users. Or, you can limit access to specific user sets.

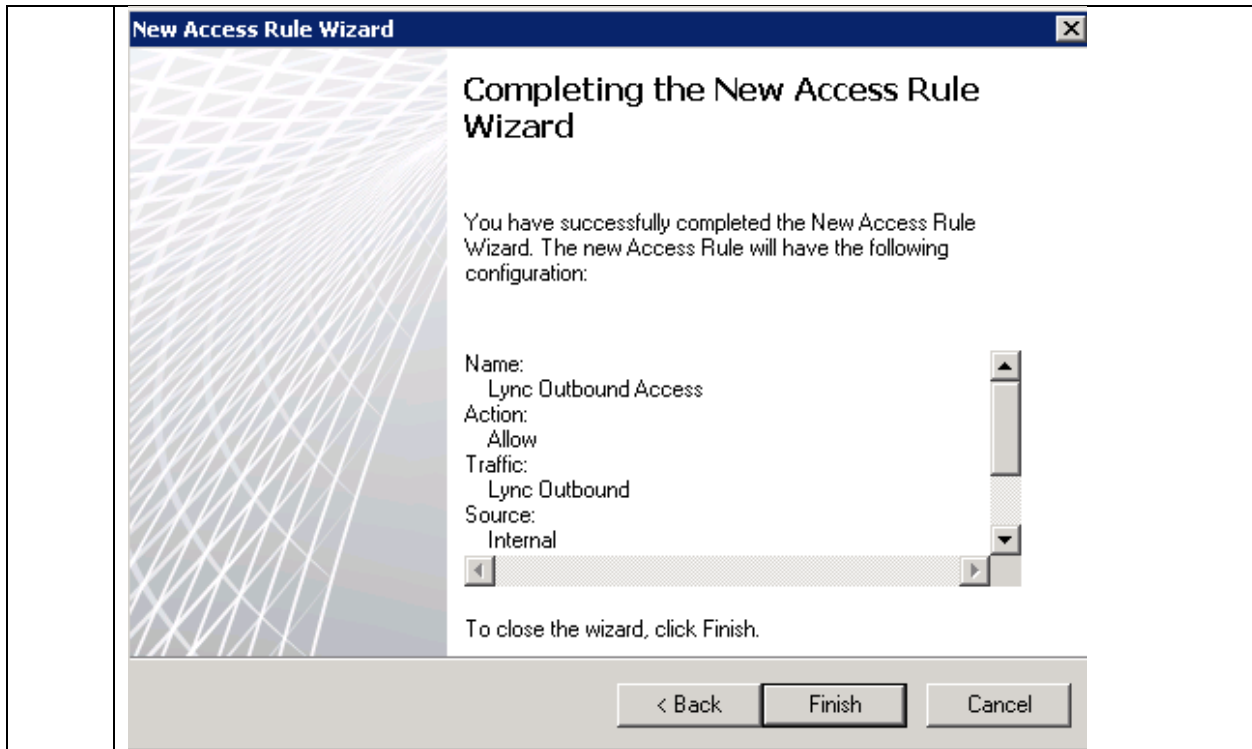
This rule applies to requests from the following user sets:

- All Users

Buttons: Add... Edit... Remove

Buttons: < Back Next > Cancel

Press Finish



Press Apply

