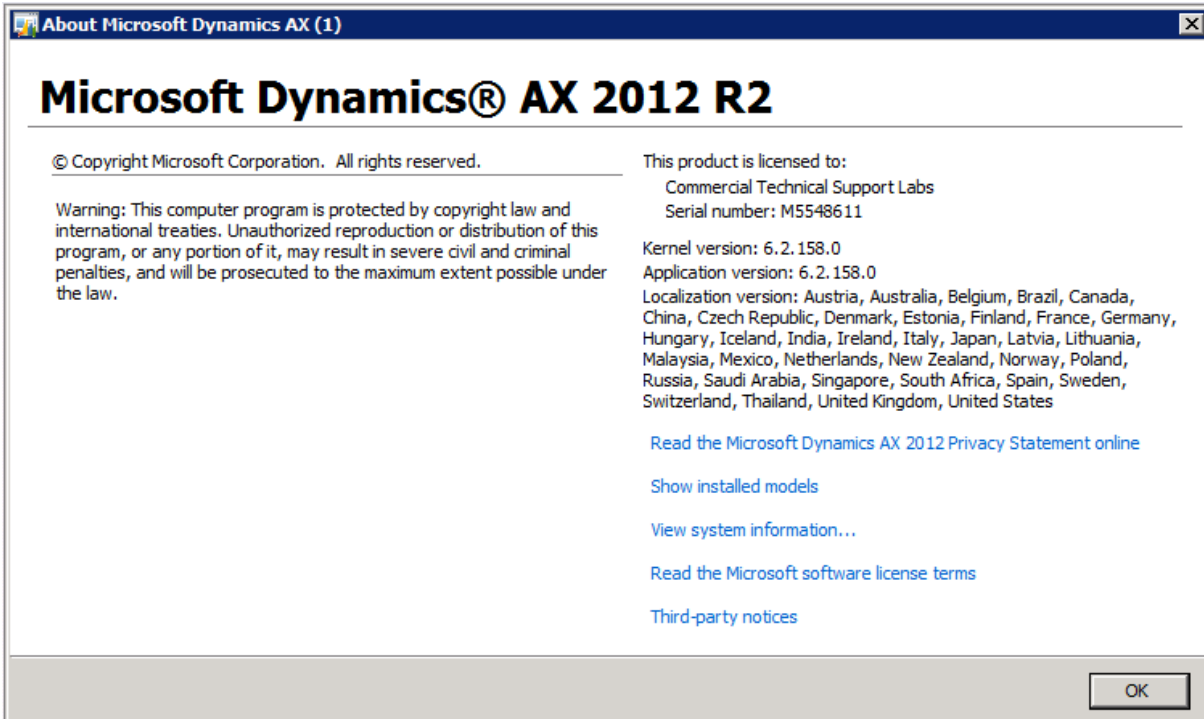




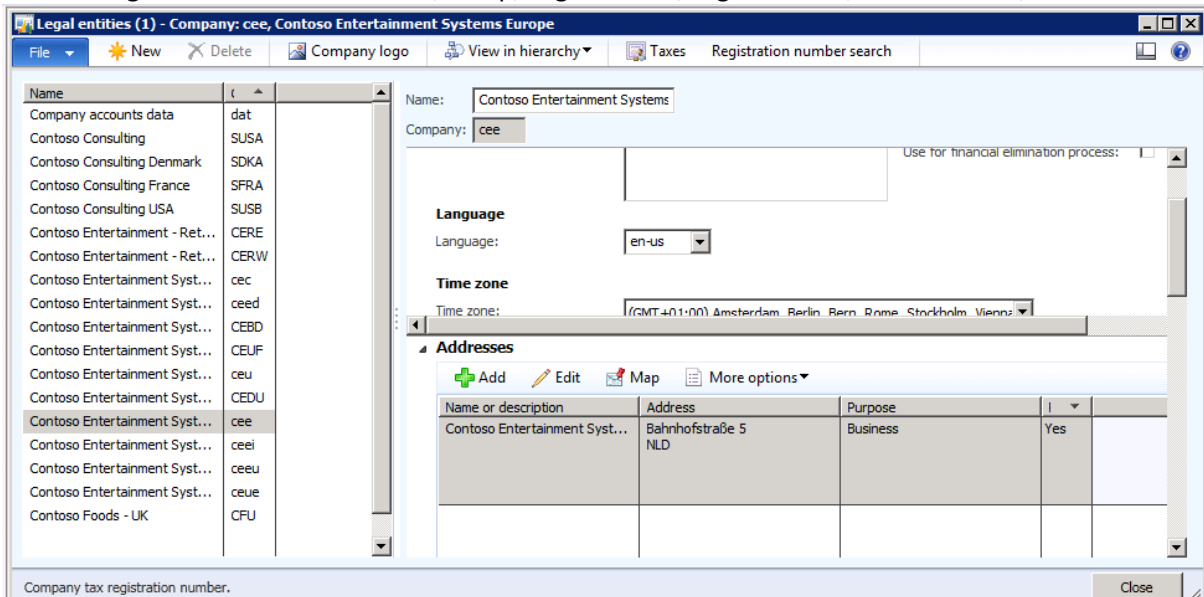
Setup SEPA Credit Transfer in AX 2012 R2 – Example for The Netherlands

Repro Steps in CEE (Contoso Germany)

AX Version:

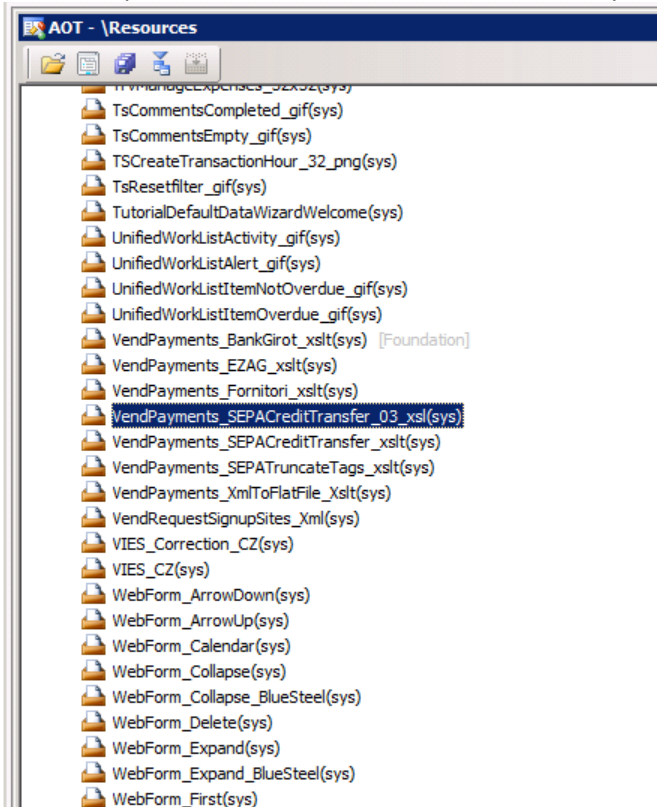


1. To have a company located in NL, first change the country/region code of company to NLD:
 - Organisation Administration/Setup/Organization/Legal entities, tab. Addresses/Edit DEU to NLD:

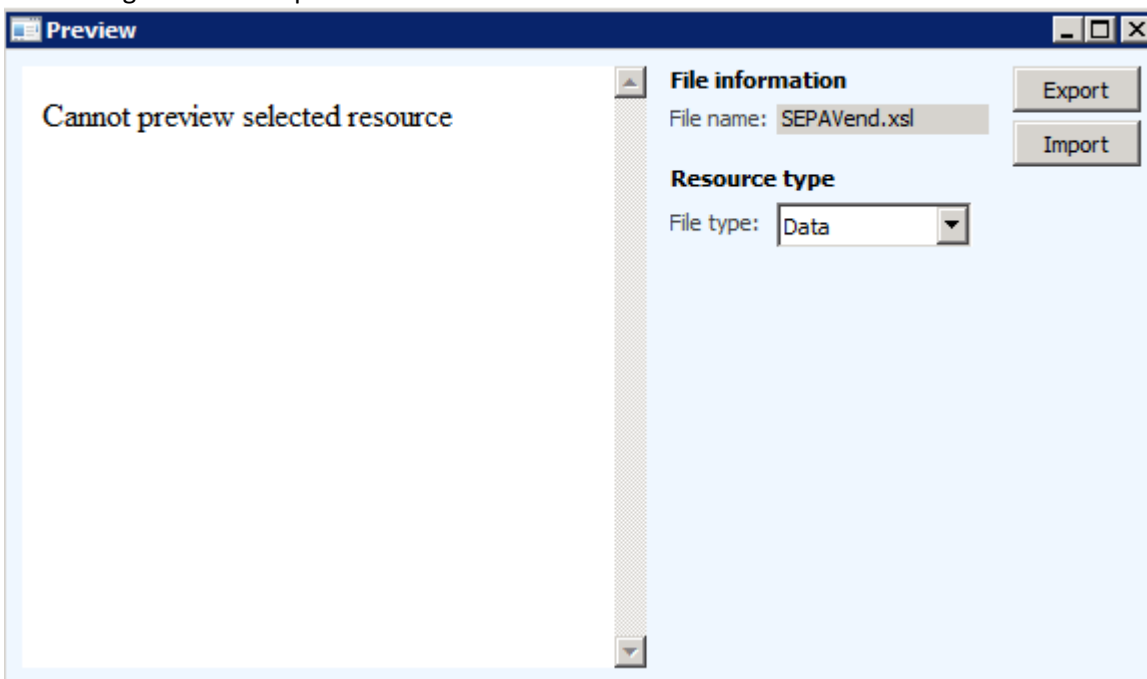




- 2. Export the xml stylesheet for the payment format from AOT:
 - Create the folder, that you want to export the XLST tile to. The folder might be named Desktop\AX_SEPA
 - Open AOT by clicking CNTRL+D
 - Expand the resources node, select 'VendPayments_SEPACreditTransfer_03_.xsl'

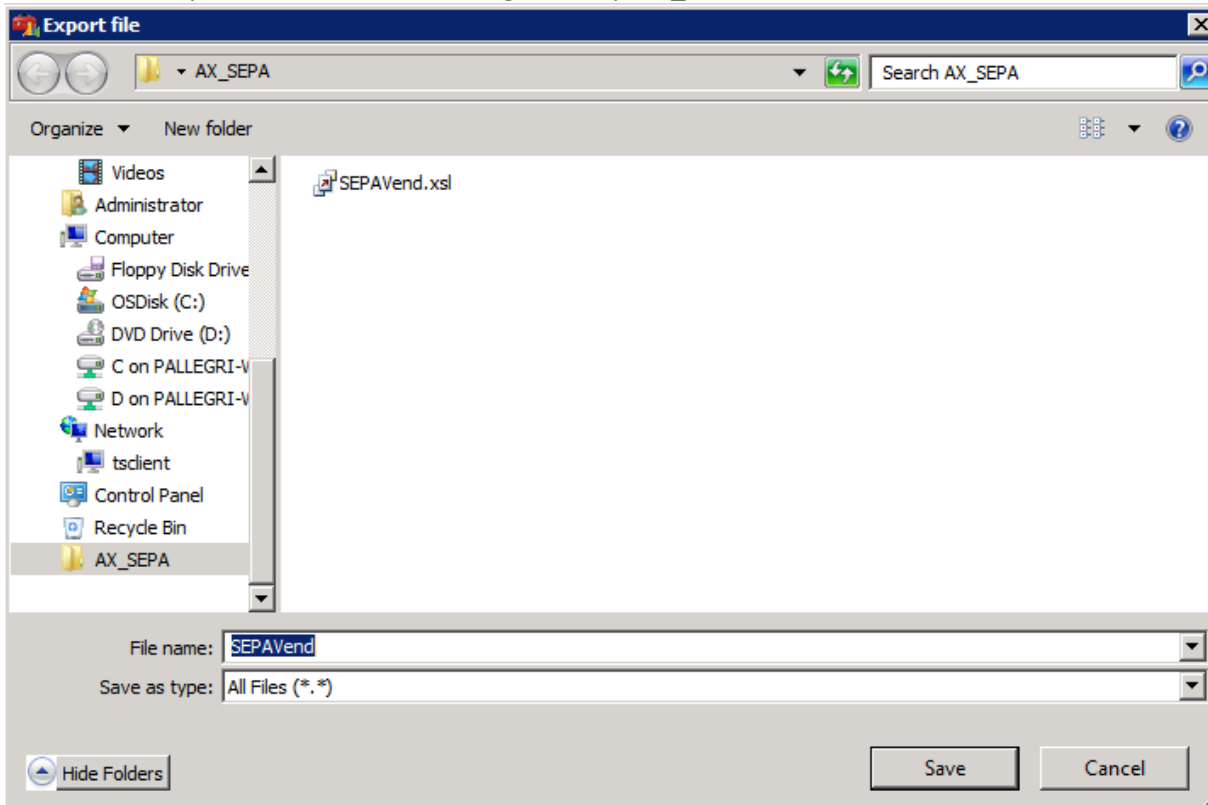


- Right click and open

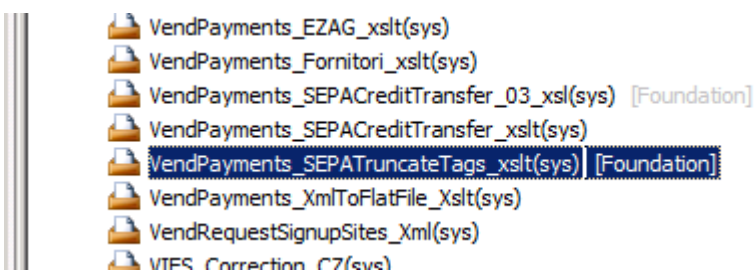




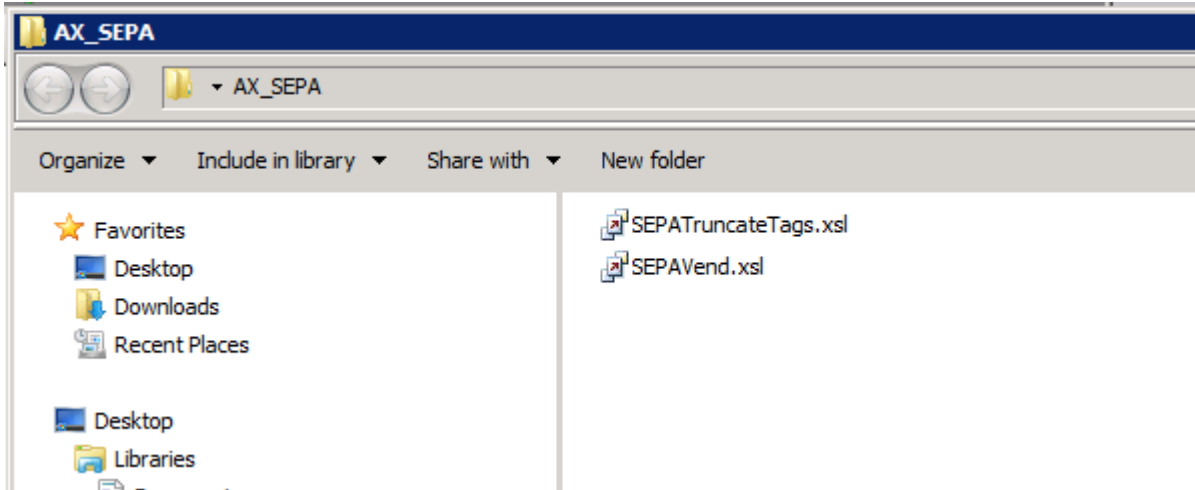
- Click Export and save the file to e.g. Desktop/AX_SEPA



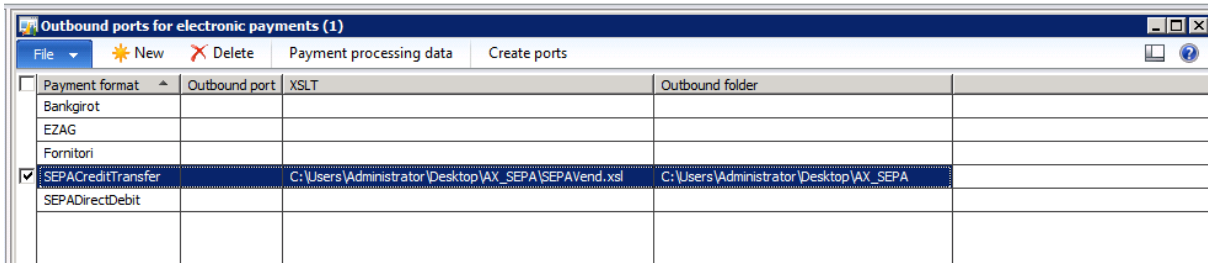
- Save window and close preview form
- Do the same for the resource 'VendPayments_SEPATruncateTags_xslt)save it in the same folder.



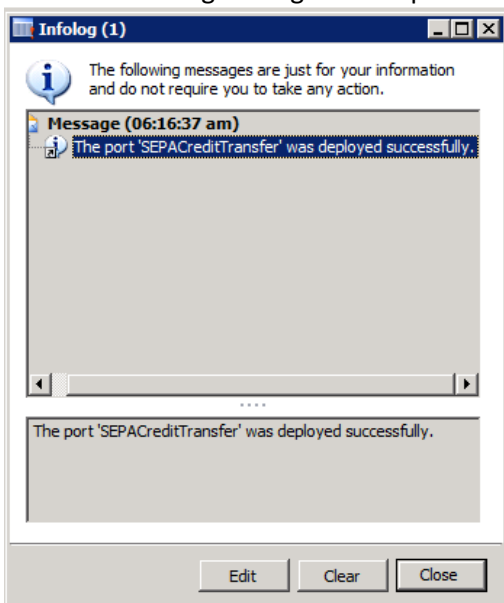
- Close the forms – now you see both files in the folder:



3. Setup Outbound ports for electronic payments
 - Go to System administration/Setup/Services and Application Integration Framework/ Electronic payment services
 - Open up the form 'Outbound ports for electronic payments'
 - Select SEPAcreditTransfer
 - Specify the location of the xlst file "SepaVend.xml" and the location of your outbound folder

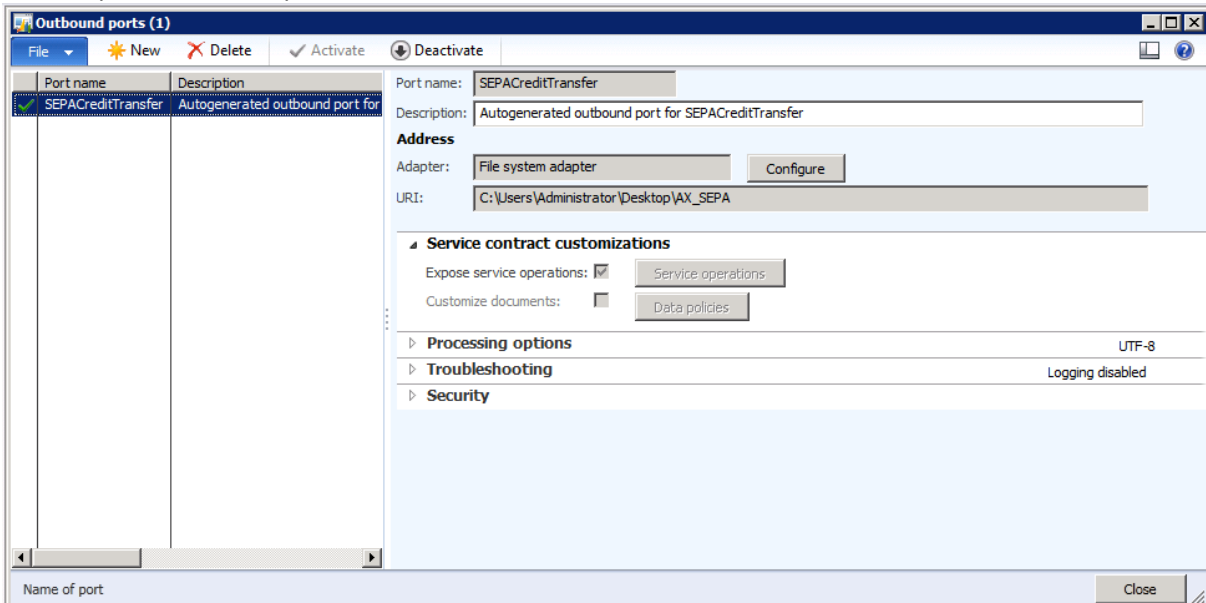


- Click on "create ports"
- Following infolog comes up:

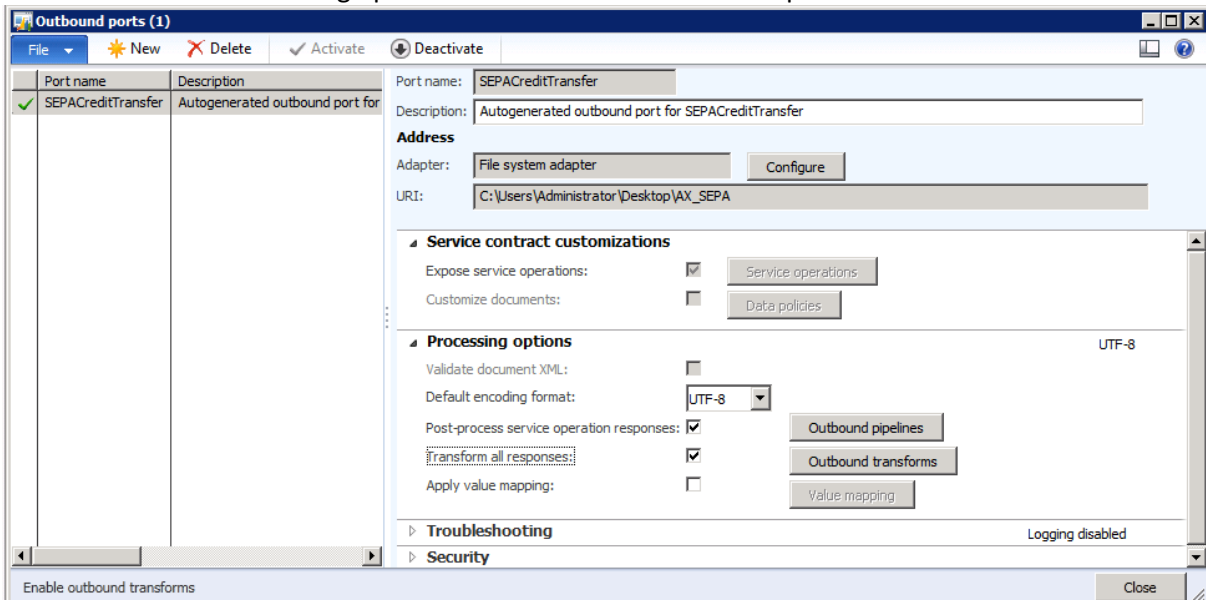




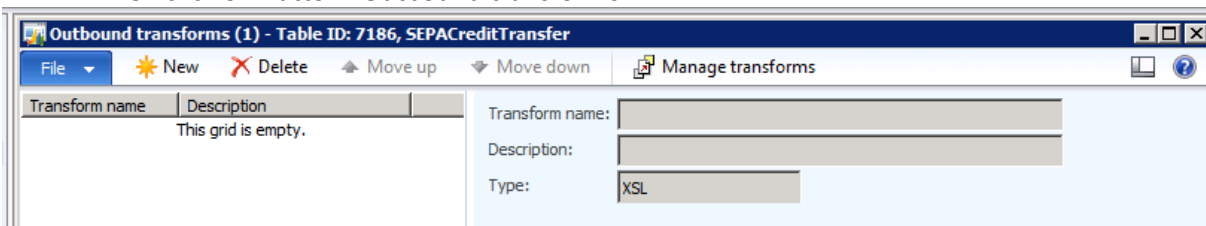
- Go to System Administration/Setup/Services and Application integration framework/Outbound ports. The new port has been created:



- Go to tab. Processing options and mark “Transform all responses”



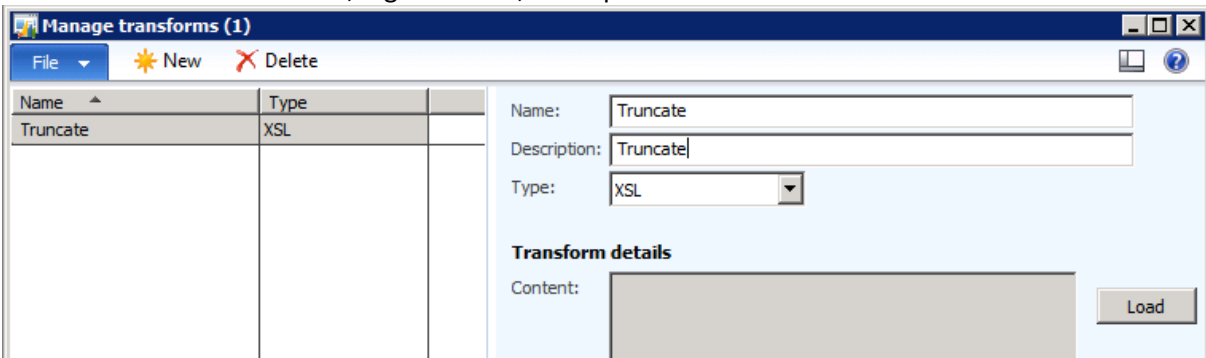
- Then click on Button “Outbound transforms”



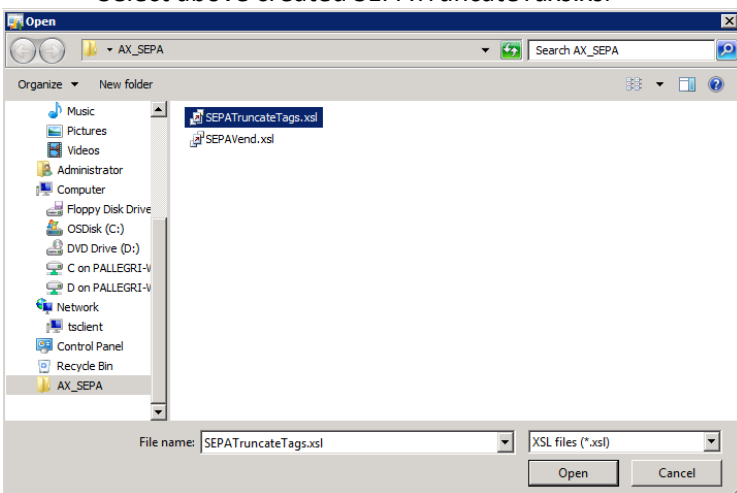


Click "Manage Transforms"

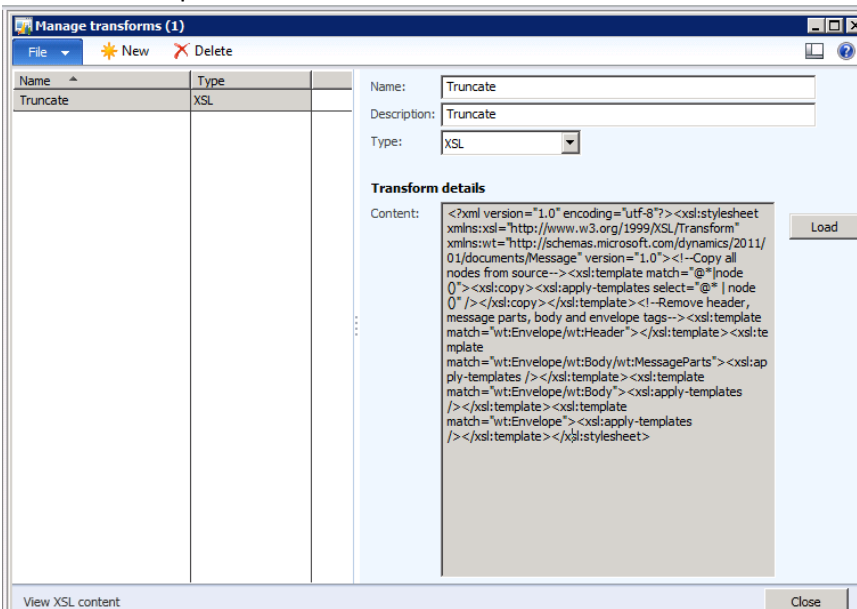
- click on "New" and name it, e.g. Truncate, description = Truncate



- Click on button "Load"
- Select above created SEPATruncateTags.xml

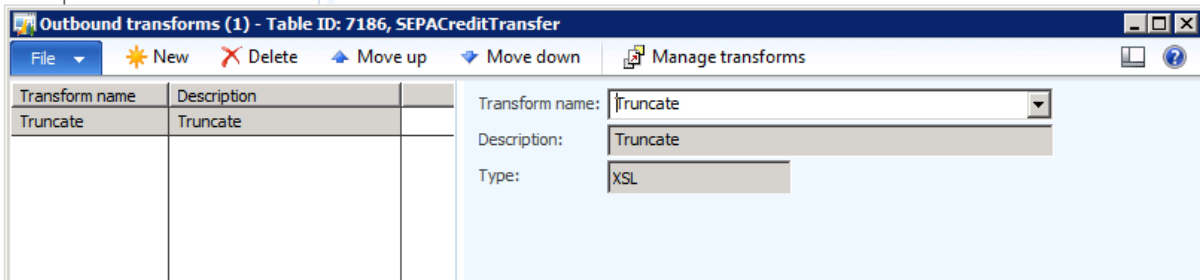


- Click Open to load it





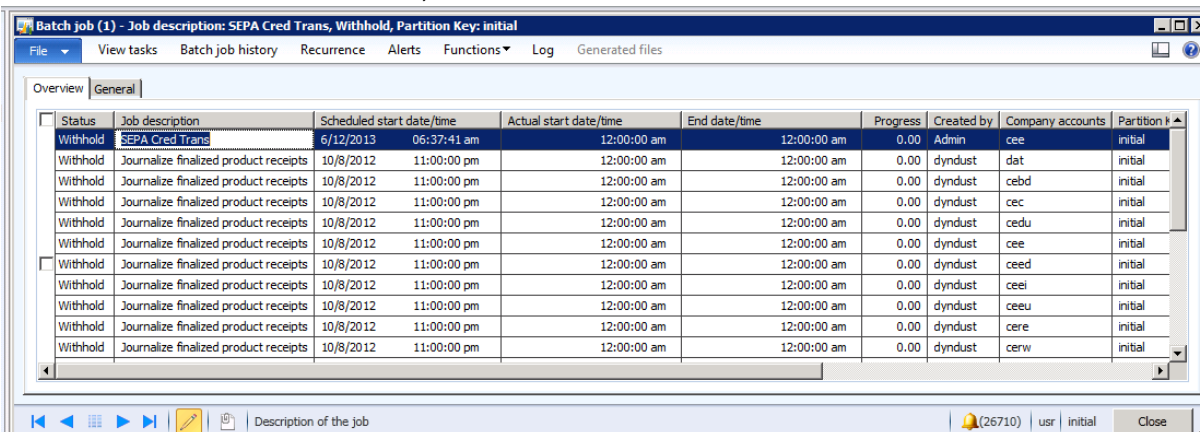
- Close the "Manage transforms" form
- In Form "Outbound transforms select "New"
- Select previously created outbound transform truncate



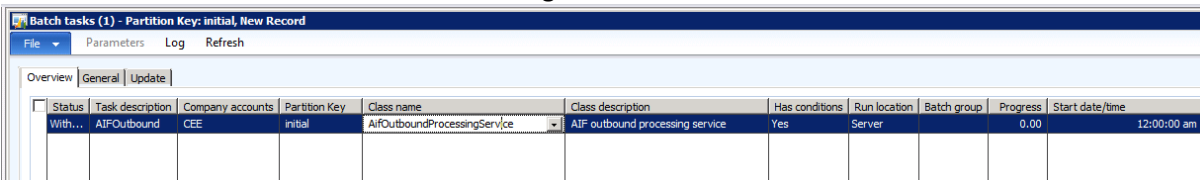
- Close all forms

4. Setup Batch job to generate the payment xml payment files

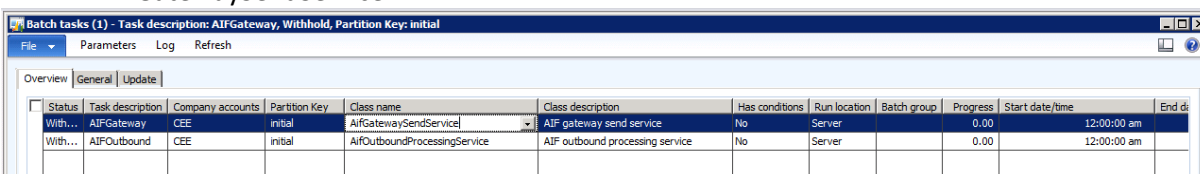
- go to System Administration/Inquiries/Batch jobs, select "Batch jobs"
- click Cntrl + N to create a new line, Name = SEPA Credit and save the line



- Click "View Tasks"
- Cntrl + N to create a new line, enter Task description = AIFOutbound, Company = CEE, Class name = select AIFOutboundProcessingService



- Create a second line in form Batch tasks:
- Enter task description = AIFGateway, Company = CEE, Class name = select AIFGatewaySendService





- Close form Batch Tasks
- In form Batch job click on Button "Recurrence" and enter a minute count = 1

- Click OK
- Back on the Batch job form click "Functions/change status to "Waiting"

5. Setup the bank account for CEE:

- go to cash and bank management/Bank accounts, select EURBANK and double click to open it
- click Edit, go to additional information and enter IBAN = NL18ABNA0484869868



6. Enter Bank details for a vendor:

- Go to Accounts payable/vendors/all vendors, select vend. 1002, Litware inch (DE), and edit
- go to tab. Payment and clear method of payment
- Click on Button Bank account
- enter Swift code = ESSLDE66XXX
- enter IBAN = DE40611500200000791711

7. Create a payment

- Go to AP/Journals/Payments/Payment Journal
- create a new journal and go to lines
- Date = today
- Account = 1002
- Debit amount = 500,00
- Offset account type = Bank
- Offset account = EURBANK



- Go to Functions/generate payment
- Mark "Export payment using Service"
- Payment format = SEPAcreditTransfer
- Bank account = EURBANK
- Mark "Show format dialog"

Microsoft Dynamics AX (1)

Generate payments

Payment method
 Method of payment:

Export format
 Export format:

Export payment using service
 Payment format: SEPAcreditTransfer

Selection
 Bank account: EURBANK
 Show format dialog:

Journal lines

Account type: Vendor

Offset account type:

Method of payment:

Payment specification:

Payment status: None, Rejected

Bank transaction type:

Bank account:

Currency:

Dimension code combination

Combination display:

Show the dialog of the payment format before generating payments?

- Click ok
- Processing date = 2012-06-12 (today's date)
- Format = Ustrd
- Country = NL

Payment processing data (1) - Journal: AP_Paym, journal batch number: 000006_004

File New Delete OK Cancel

Name	Value	Description	Payment format
Processing date	2013-06-12	Payment processing date	SEPAcreditTransfer
Format	Ustrd	Remittance format - Strd or Ustrd (Structured ...	SEPAcreditTransfer
Country	NL	Country code (IT, FI, DE, AT, BE, FR, ES or NL)	SEPAcreditTransfer

Print

Control report:

If this check box is selected, a control report will be printed.

Generate payments with selection of method of payment or export format

🔔 (267)



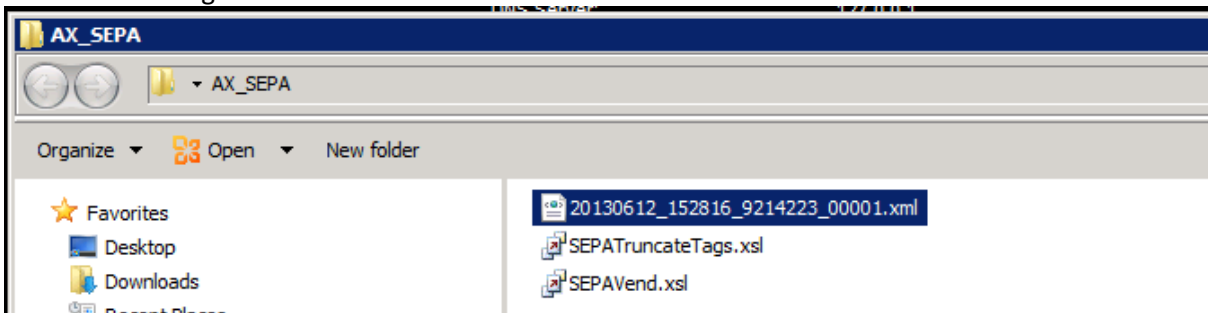
- Click ok

Result:

A. Control list is printed

Vendor account number	Vendor name	Bank	Routing number	Account number	Debit	Credit Currency
1002	Litware, Inc. (DE)	EURBANK Frankfurt	12345678	78545945	500.00	EUR
Currency		Amount				
EUR		500.00				

B. Following file arrived in the SEPA folder:





Microsoft Dynamics®

```
C:\Users\Administrator\Desktop\AX_SEPA\20130612_152816_9214223_00001.xml - Windows Internet Explorer
C:\Users\Administrator\Desktop\AX_SEPA\20130612_152816_9214223_00001.xml
C:\Users\Administrator\Desktop\AX_SEPA\20130612_152816_9214223_00001.xml

<?xml version="1.0"?>
- <Document xmlns:xsi="http://www.w3.org/2001/XMLSchema-instance"
  xmlns="urn:iso:std:iso:20022:tech:xsd:pain.001.001.03">
  - <CstmrCdtTrfInitn>
    - <GrpHdr>
      <MsgId>000006 004</MsgId>
      <CreDtTm>2013-06-12T10:27:31</CreDtTm>
      <NbOfTx>1</NbOfTx>
    - <InitgPty>
      <Nm>Contoso Entertainment Systems Europe</Nm>
    </InitgPty>
  </GrpHdr>
  - <PmtInf>
    <PmtInfId>000006 004</PmtInfId>
    <PmtMtd>TRF</PmtMtd>
    <NbOfTx>1</NbOfTx>
  - <PmtTpInf>
    - <SvcLvl>
      <Cd>SEPA</Cd>
    </SvcLvl>
  </PmtTpInf>
  <ReqdExctnDt>2013-06-12</ReqdExctnDt>
  - <Dbtr>
    <Nm>Contoso Entertainment Systems Europe</Nm>
    - <PstlAdr>
      <Ctry>NL</Ctry>
      <AdrLine>Bahnhofstrasse 5</AdrLine>
    </PstlAdr>
  </Dbtr>
  </CstmrCdtTrfInitn>
</Document>
```

Opened with notepad:

```
20130612_152816_9214223_00001.xml - Notepad
File Edit Format View Help
<Document xmlns="urn:iso:std:iso:20022:tech:xsd:pain.001.001.03"
  xmlns:xsi="http://www.w3.org/2001/XMLSchema-instance"><CstmrCdtTrfInitn><GrpHdr><MsgId>000006
004</MsgId><CreDtTm>2013-06-12T10:27:31</CreDtTm><NbOfTx>1</NbOfTx><InitgPty><Nm>Contoso
Entertainment Systems Europe</Nm></InitgPty></GrpHdr><PmtInf><PmtInfId>000006
004</PmtInfId><PmtMtd>TRF</PmtMtd><NbOfTx>1</NbOfTx><PmtTpInf><SvcLvl><Cd>SEPA</Cd></SvcLvl></P
mtTpInf><ReqdExctnDt>2013-06-12</ReqdExctnDt><Dbtr><Nm>Contoso Entertainment Systems
Europe</Nm><PstlAdr><Ctry>NL</Ctry><AdrLine>Bahnhofstrasse 5</AdrLine><AdrLine
/></PstlAdr></Dbtr><DbtrAcct><Id><IBAN>NL18ABNA0484869868</IBAN></Id></DbtrAcct><DbtrAgt><FinInst
nId><BIC>ABCDFGHIJ</BIC></FinInstnId></DbtrAgt><ChrgBr>SLEV</ChrgBr><CdtTrfTxInf><PmtId><EndToE
ndId>Not-Provided</EndToEndId></PmtId><Amt><InstdAmt
Ccy="EUR">500.00</InstdAmt></Amt><CdtrAgt><FinInstnId><BIC>ESSLDE66XXX</BIC></FinInstnId></CdtrAg
t><Cdtr><Nm>Litware, Inc. DE</Nm><PstlAdr><Ctry>DE</Ctry><AdrLine>Schlossallee
12</AdrLine><AdrLine>87654
Rostock</AdrLine></PstlAdr></Cdtr><CdtrAcct><Id><IBAN>DE40611500200000791711</IBAN></Id></CdtrAcc
t></PmtInf></CstmrCdtTrfInitn></Document>
```